

Southampton Squared Circles.

Peter Mills

Hampshire Squared Circles

Southampton

2nd June 1881

S/201 Series 1. 1st I A-1 SC (Special Code)



Southampton To Bristol dated JU 2/81 code 1 N, on a one penny Venetian red. 3 arcs and a triangle outside the circle.

An embossed oval on the flap for 'The London & South Western Railway Comp/Steam Packet Department/Southampton'.

Hampshire Squared Circles

Southampton

3rd October 1882

S/202. Series 1. 2nd Type 1 A – I SC (Special Code)



Used from 7th August 1882 to 22nd February 1884



SOUTHAMPTON/1 P/OC 3/82

Hampshire Squared Circles

Southampton

26th October 1882

S/202. Series 1. 2nd of type 1 A-1 SC (Special Code)



One Penny Pink stationery envelope said to be from Canon Wilberforce, appointed Canon of Winchester 1878.

SOUTHAMPTON/I P/OC 26/82.

Recorded used from 7th August 1882 until 22nd February 1884

Hampshire Squared Circles

Southampton

25th December 1882

S/202 Series 1. 2nd Type 1A – I SC (Special Code)



SOUTHAMPTON/1P/DE 25/82.

Small cds of GUERSEY/A/DE26/82.

Used from 2nd August 1882 to 22nd February 1884.

Hampshire Squared Circles

Southampton

29th March 1883

S/202 Series 1. 2nd Type 1 A – 1 SC (Special Code)



SOUTHAMPTON/1 P/MR29/83

Receiving cds of GIBRALTAR/ 8/AP 3/83

Hampshire Squared Circles

Southampton

5th April 1883



S/202 1 2nd type 1 A – 1 SC (Special Code)



SOUTHAMPTON/1 N/AP 5/83

S/203. Series 1, 1st of type II. A-1 SC (Special Code)



Used from 6th April 1884 to 19th November 1884



Southampton MY 7 84 code 1 J on Halfpenny Slate-blue
Two arcs and triangle outside the circle

Hampshire Squared Circles

Southampton

30th May 1883



Envelope to Gibraltar via France.
SOUTHAMPTON/1P/MY30/83. Cds GIBRALTAR/B/JU4/83.

Hampshire Squared Circles

Southampton

18th May 1886S/204. Series II. 2nd of type II.A 1 SC (Special Code)

Posted at Cheltenham, MY 16, 86, code 1 J. Duplex 177 cancel on a Penny lilac.

Southampton MY 18 86 code 1 P, receiving stamp on the envelope.

Three arcs outside the circle.

This stamp was in use from August 24th 1885 to March 1st 1887.

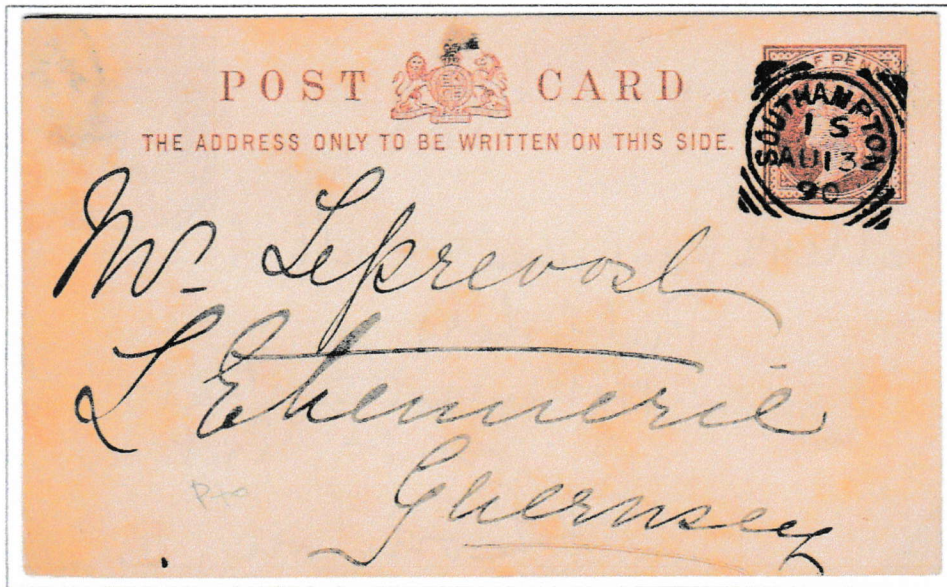
Although addressed correctly to East Liss, the letter was misdirected to Southampton, then to Eastleigh, West Liss, Hertford and finally East Liss.

Hampshire Squared Circles

Southampton

S/206, Series 1, 4th re-cut II A-1 SC (Special Code)

Used from 22nd October 1888 to 4th November 1891.



SOUTHAMPTON/1 S/AU13/90



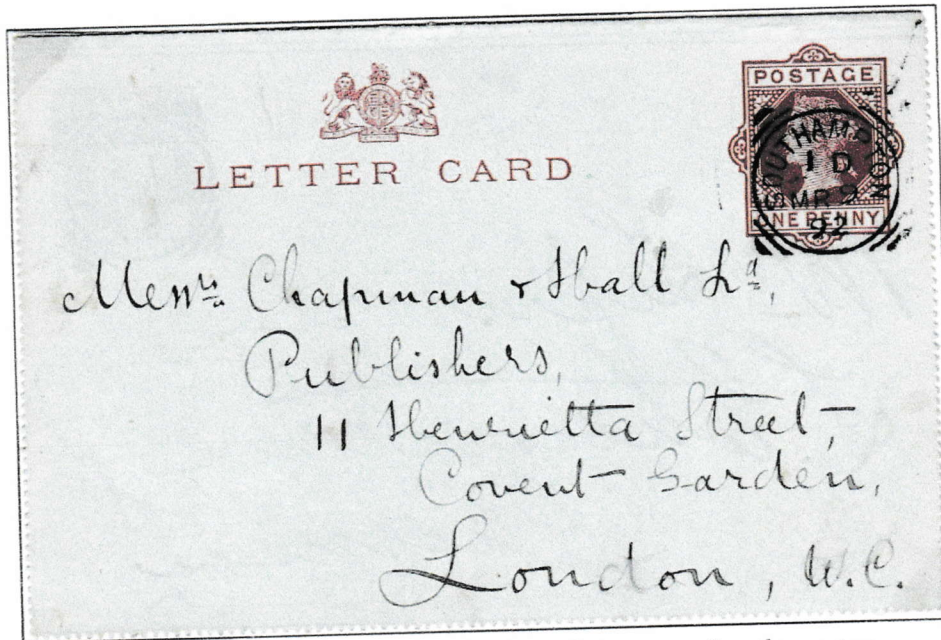
Southampton to Ipswich dated MR 24/91 code 1S on halfpenny brown postcard.
Postmark with one arc and small triangles outside the circle.

Hampshire Squared Circles

Southampton

9th March 1892

S/207 Series 1, 1st type III, A-1 SC (Special Code)



One Penny Letter Card from 2, Denzil Avenue, Southampton.

SOUTHAMPTON/1 D/MR 9/92.



SOUTHAMPTON/1 M/MR16/92

Hampshire Squared Circles

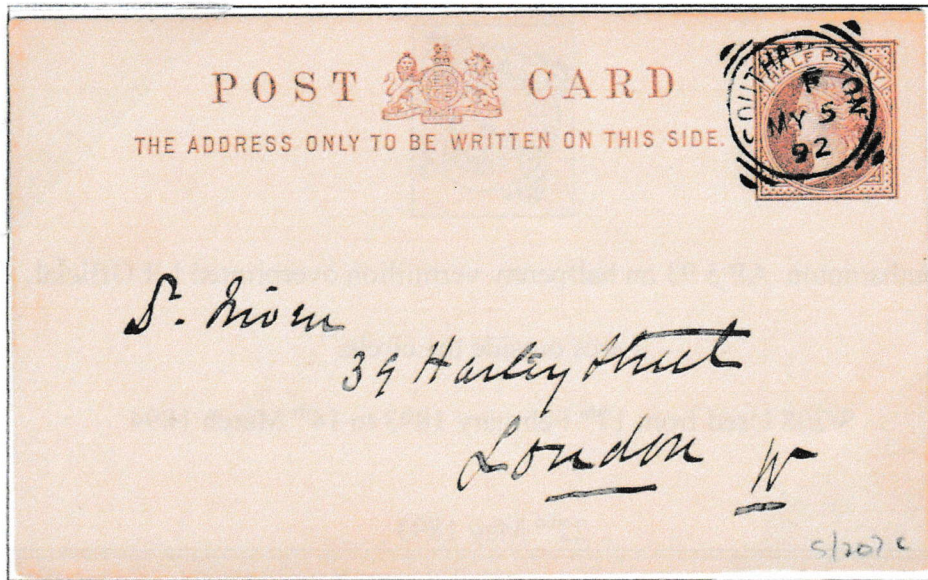
Southampton

5th May 1892 code 1 F

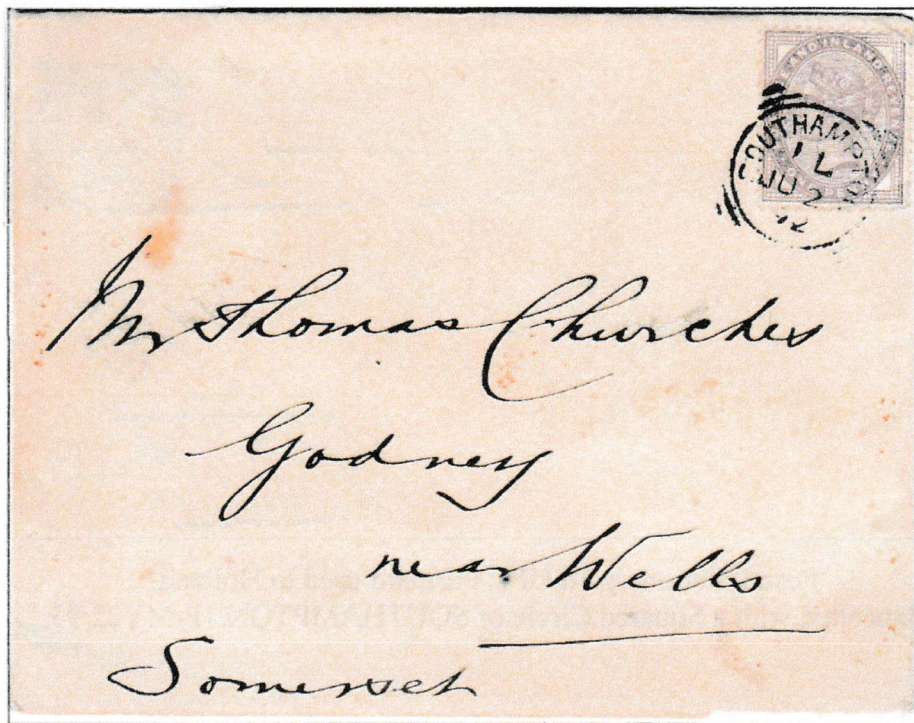
S/207, Series 1, 1st type III, A-1 SC (Special Code)



S/207 used from 5th December 1891 to 15th October 1892



SOUTHAMPTON/1 F/MY 5/92.



SOUTHAMPTON/1 L/JU 2/92

Hampshire Squared Circles

Southampton

S/208, Series 1, 2nd type. 3rd recut.



Southampton AP 5 93 on halfpenny vermilion overprinted I R Official.

2 arcs outside the circle.

S/208 Used from 17th February 1893 to 14th March 1894

22nd May 1893



Postal Stationery 1d UPU Postcard used to Holland.
Cancelled with a Squared Circle of SOUTHAMPTON/1P/MY22/93.

Hampshire Squared Circles

Southampton

8th May 1882

S/209. Series 2 type 1 SC (Special Code)



4d grey-brown plate 18.

3 arcs and large triangles at the corners outside the circle. MY 8 82 code 2 H.

23rd July 1882

S/209. Series 2. 1st type, A-2 SC (Special Code)



Southampton to Plymouth dated JY 23/82 code 2 P on a halfpenny brown postcard.

Hampshire Squared Circles

Southampton

S/209. Series 2 type 1. A-2 SC (Special Code)



SOUTHAMPTON/2 N/JY 31/83

½d brown stationery post card.

Message from George von Hugo, on board SS Oder to his friend at the Lizard, Cornwall.

Hampshire Squared Circles

Southampton

S/210. 2nd IA-2 SC (Special Code)Recorded used 3rd November 1884 to 26th January 1886.

SOUTHAMPTON/2D/JA 28/86 on 2½d Lilac.

Dated two days later than recorded.



SOUTHAMPTON/2 P/FE 16/85.

Receiving cds WAREHAM/A/FE17/85

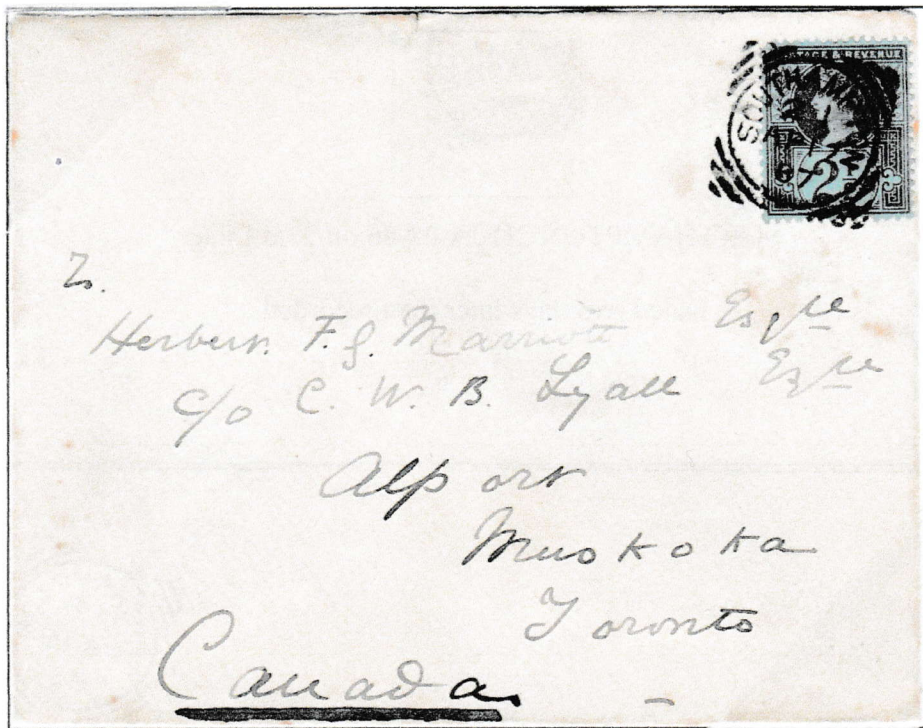
Hampshire Squared Circles

Southampton

12th April 1887



S/211. Series 2. 1st of type II A-SC (Special Code)



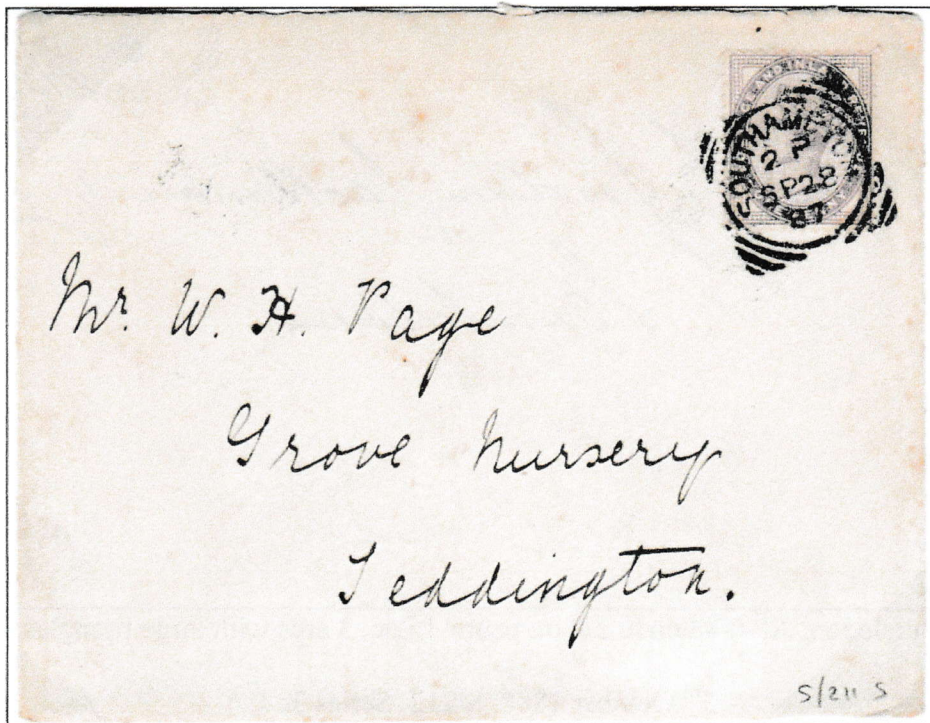
SOUTHAMPTON/2 I/AP12/87 on a purple on blue Jubilee issue, Sent to Muskoka, Toronto, Canada.

Back of envelope (reduced x 25%).



Hampshire Squared Circles

Southampton

28th September 1887S/211. Series 2. 1st of type 2 A-SC (Special Code)

From Southampton to Teddington dated SP 28/87 code 2 P on a penny lilac.
 Two arcs and small triangles outside the circle. Used from 6th March 1886 to
 7th January 1888

Hampshire Squared Circles

Southampton

3rd October 1888

S/212. Series 3. 3rd type I, SC (Special Code)



To Bursledon. AP 6 88 code 2 P on penny Lilac. 3 arcs with large triangles.

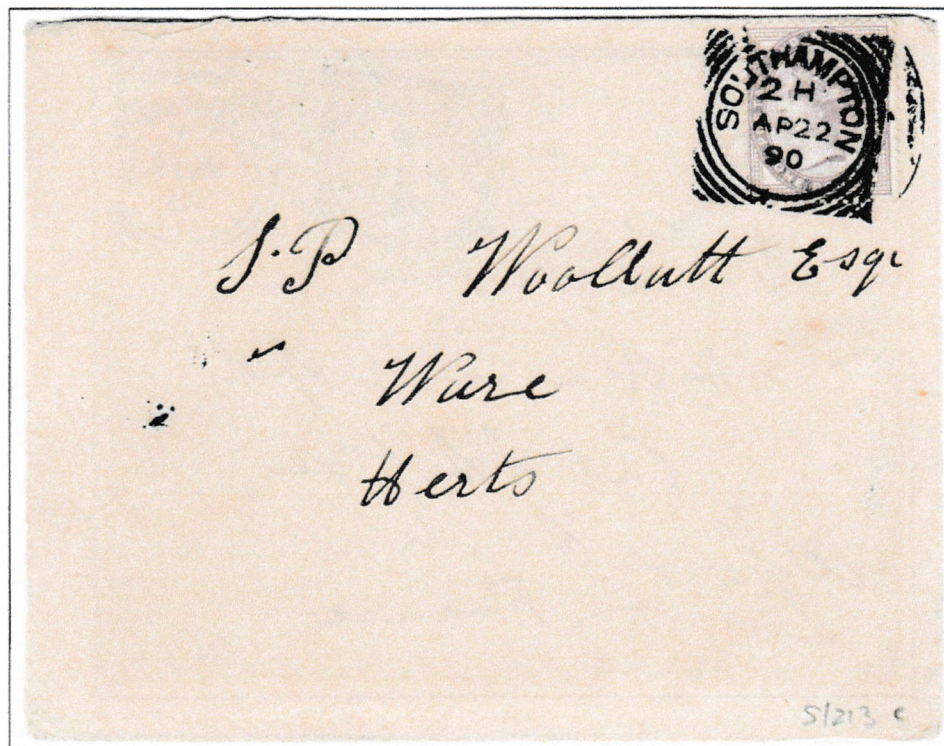
3rd October 1888. S/212. Series 3.



From Southampton to France OC 3/88 code 2 D

Hampshire Squared Circles

Southampton

22nd April 1890S/213. Series 3. 4th re-cut I A-2 SC (Special Code)

From Redbridge AP 22/90 code A, Southampton AP22/90 code 2 H on a penny
Lilac to Ware, Herts. AP 22/90 code A.

S/213 used from 23rd April 1889 to 24th August 1890.

Hampshire Squared Circles

Southampton

14th May 1890S/213. Series 3, 4th re-cut I A-2 S C (Special Code)

From Totton MY 14/90 code A, Southampton MY 14/90 code 2 F on a pair of one penny lilacs and a halfpenny vermillion to Antibes, France.

S/213 used from 23rd April 1889 to 24th August 1890

Hampshire Squared Circles

Southampton

3rd August 1889

S/213 Series 3, 4th recut I A-2 SC (Special Code)



SOUTHAMPTON/2H/AU 3/89

Sent to Berlin, Germany.

Hampshire Squared Circles

Southampton

S/214. 3rd Series 5th, 1 A-2 SC (Special Code)



SOUTHAMPTON/2 K/JY17/91

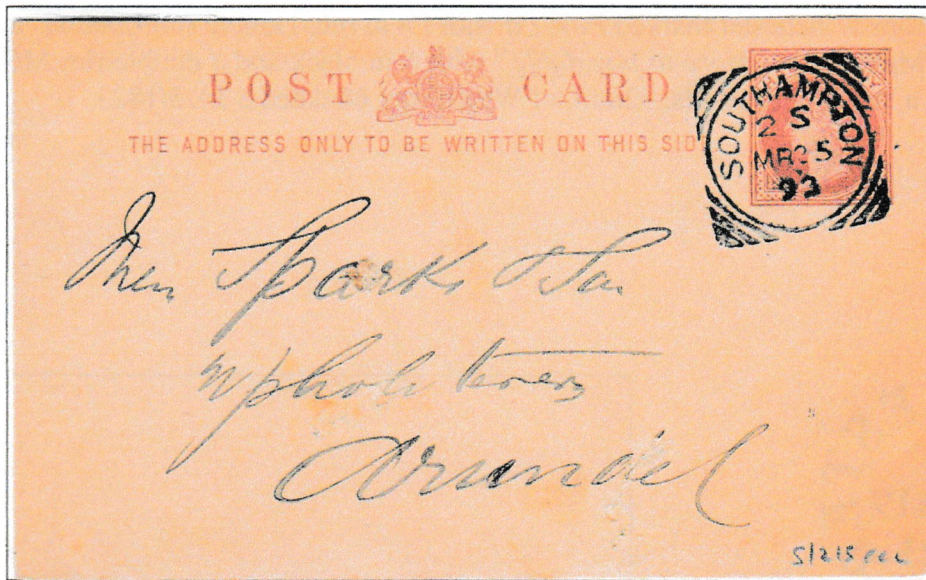
Used from 16th September 1890 to 9th December 1891

Hampshire Squared Circles

Southampton

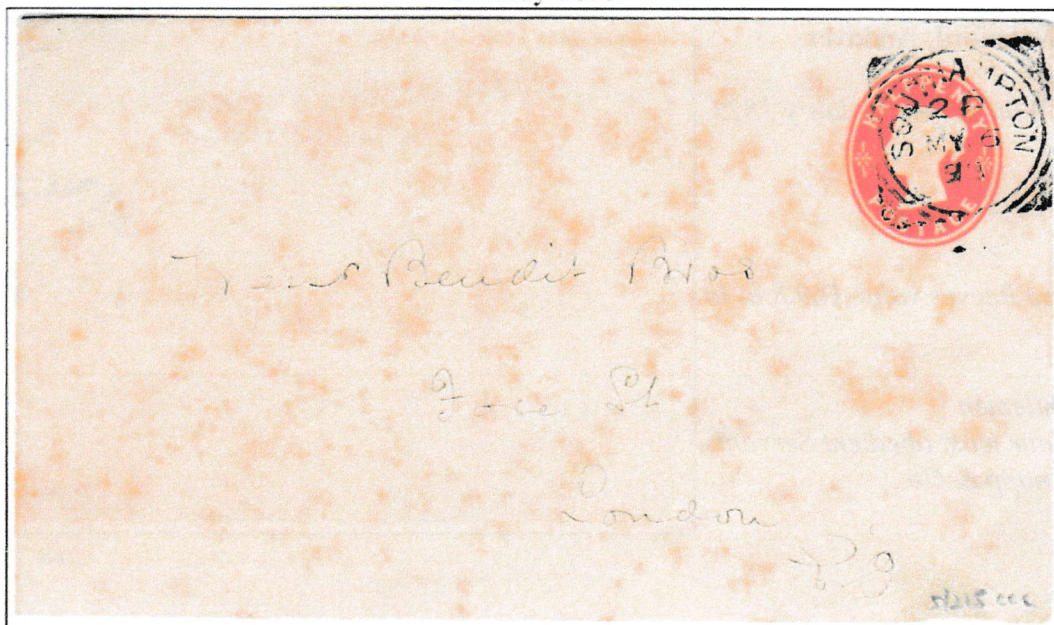
25th March 1893

S/215. Series 3. 2nd II A-2 SC (Special Code)



Halfpenny Postcard to Arundel from Southampton MR 25/93. 2 arcs and very large triangles outside the circle. S/215 was used from 1st January 1892 to 8th March 1894

6th May 1893



Halfpenny stationery envelope with Southampton, type S/215, dated MY 6/93 code 2 P